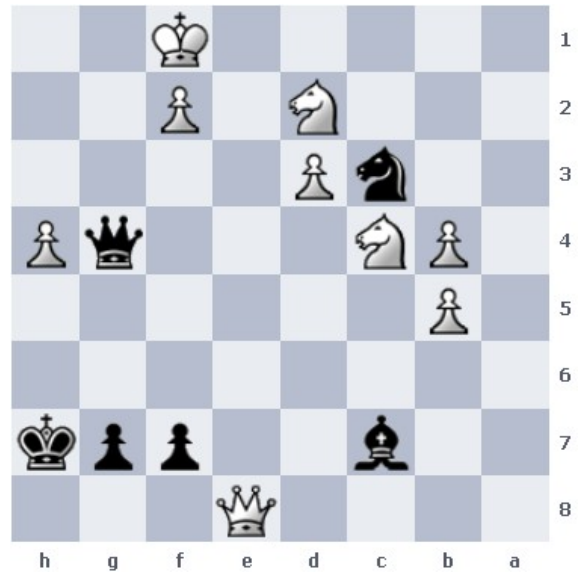
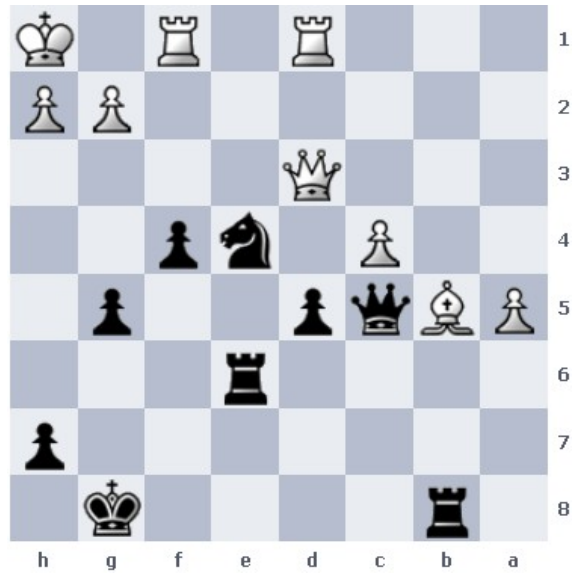


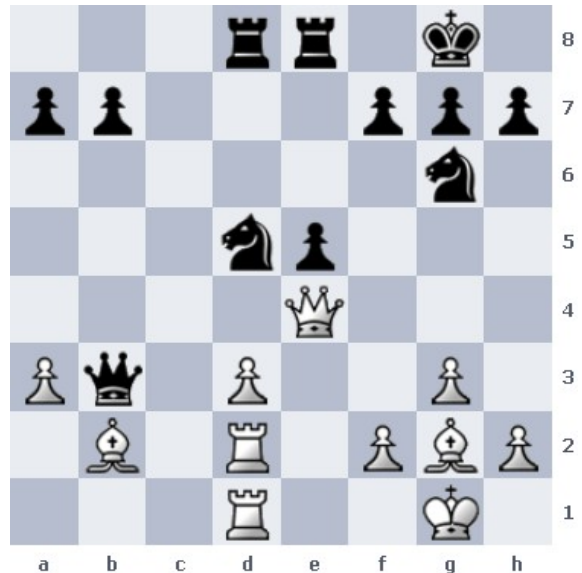
[1] Weiß am Zug



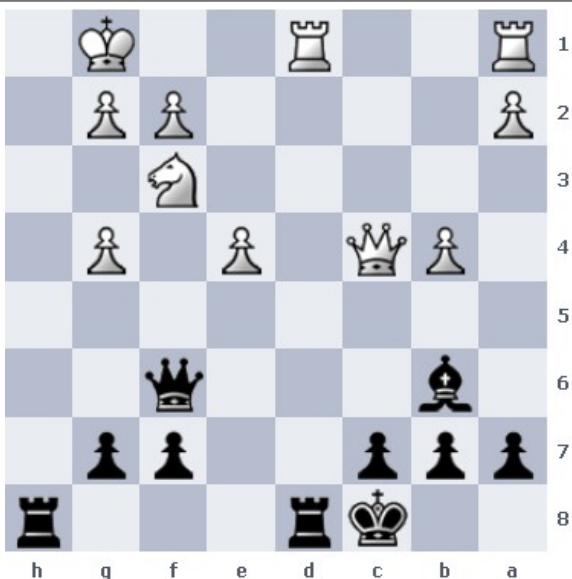
[2] Schwarz am Zug



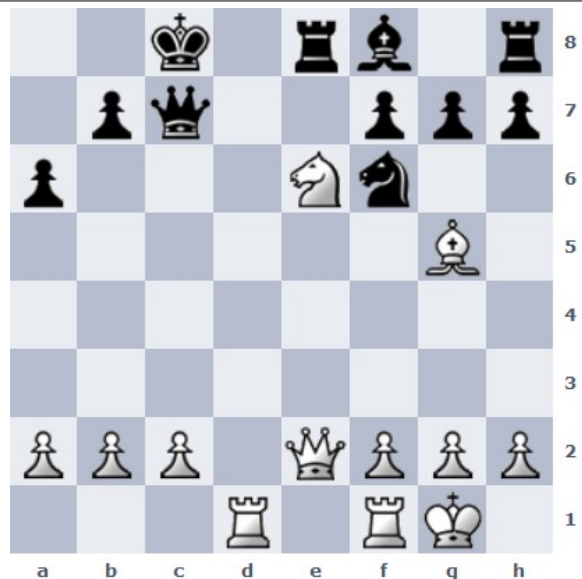
[3] Schwarz am Zug



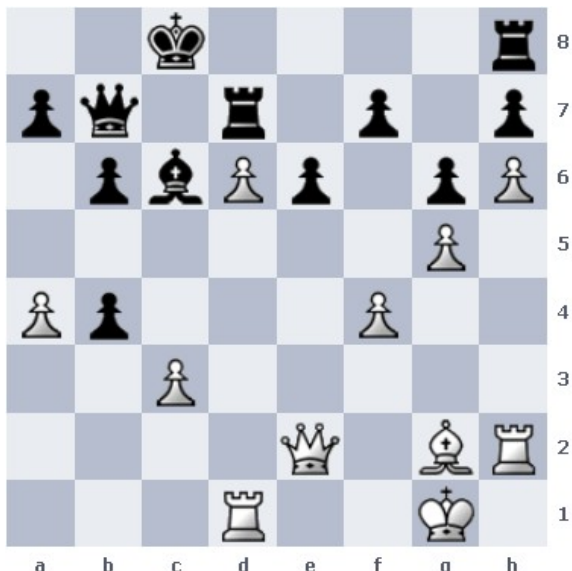
[4] Weiß am Zug



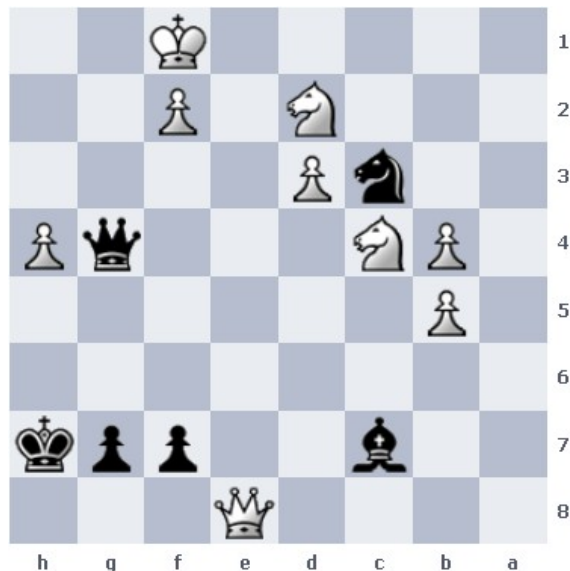
[5] Schwarz am Zug



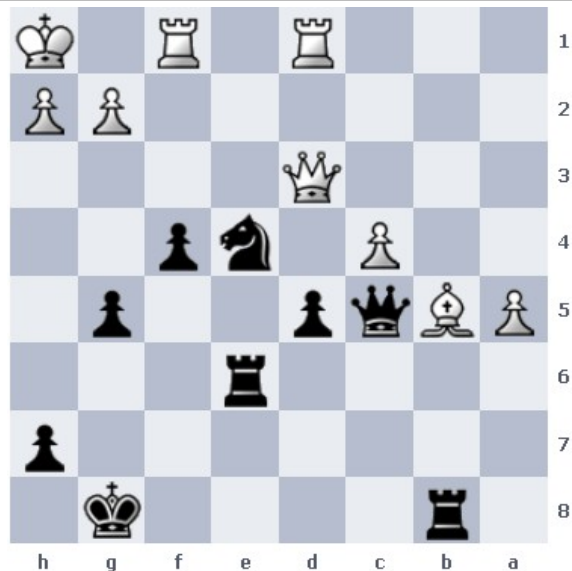
[6] Weiß am Zug



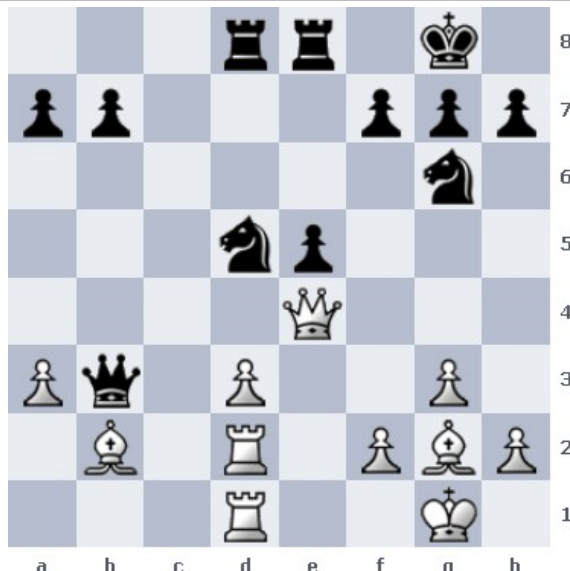
[1] 1. Dc4 (gewinnt den Läufer auf c6)



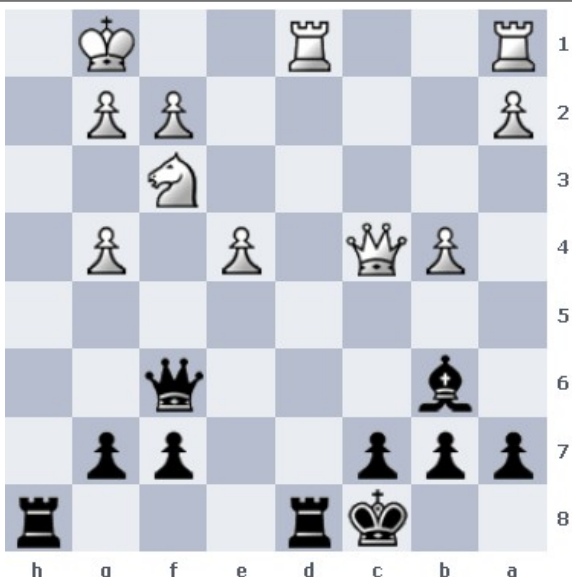
[2] 1. ... Lh2 (droht Dg1#) 2. Ke1 Dd1#



[3] 1. ... Sg3+ 2. hxg3 Th6#



[4] 1. Dc4! Db6 (DxD? Dxc4) 2. LxS



[5] 1. ... Td2!! 2. e5 (2.TxT? DxT+ 3.Df1 Th1+! oder 2.SxT?? Dxf2#) Lxf2+ 3. Kf1 Th1+ 4.Sg1 TxS#



[6] 1. Td8+! DxT 2.Dc4+ (oder TxT SxD)