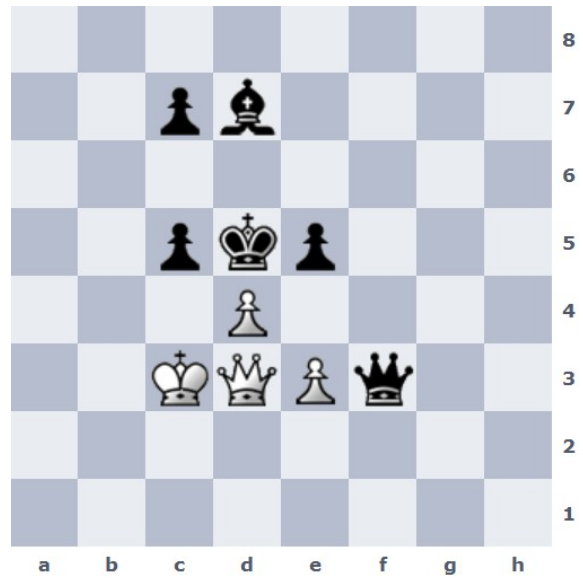


1. g3+ Kh3 2. Se4 nebst Sf2#



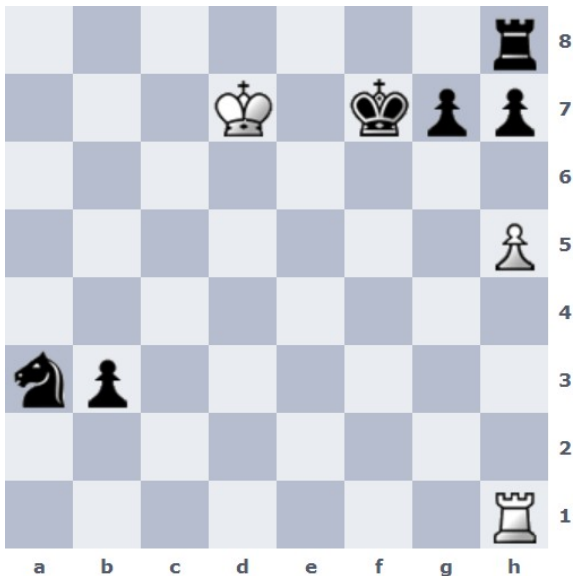
1. e4+ Kxe4 2. Dc4+ Kc6 (oder Kd6 dxc5+ Ke7 DxD) 3. d5+! Kxd5 4. Da6#



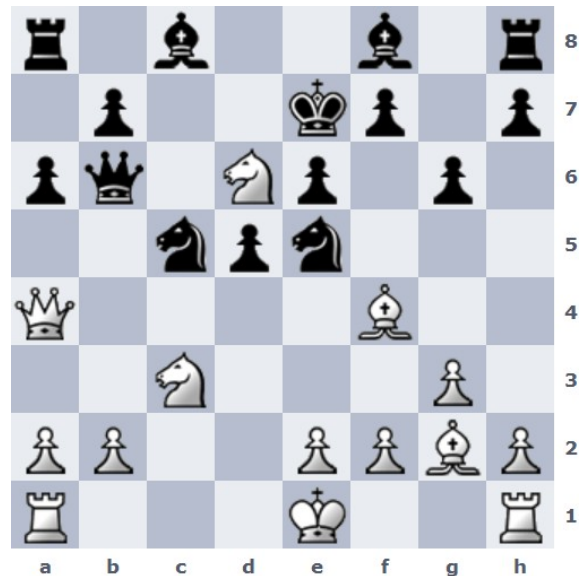
1. Sd5 (schnürt den schwarzen König ein) Dxf2 2. Dh6#



1. Txf7+ KxT 2. Dh5#



1. Tf1+ Kg8 2. h6!! gxh6 (oder g6 Ke7 mit Tf8#) 3. Ke7 b2 4. Tg1#



1. Sxd5! exd5 (Kd8? De8# oder KxS LxS+ KxL Df4#) 2. De8+ KxS 3. LxS#