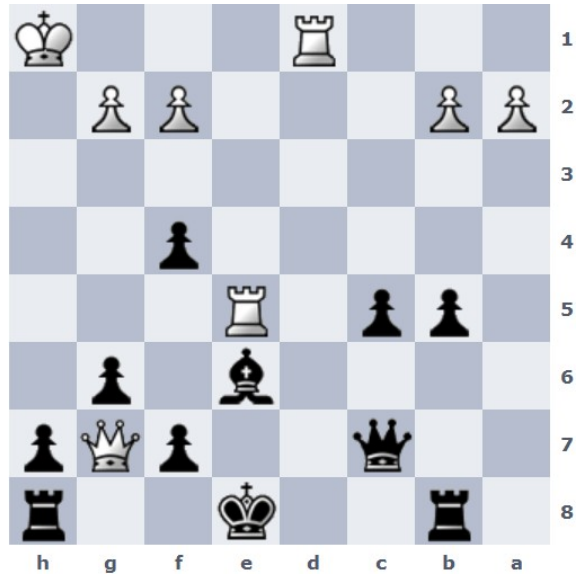
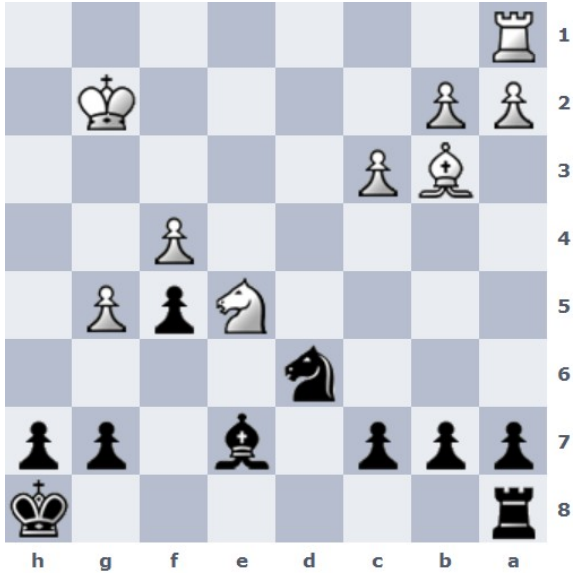


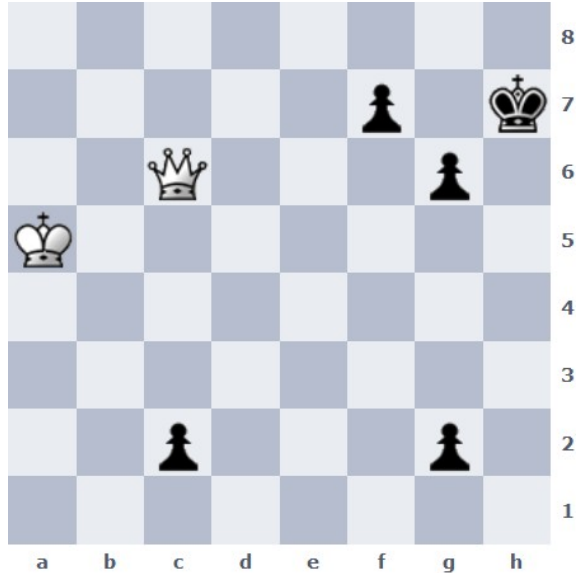
Schwarz am Zug



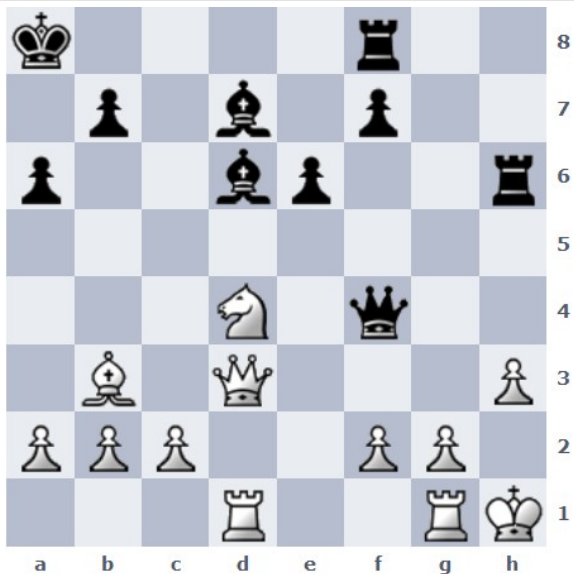
Schwarz am Zug



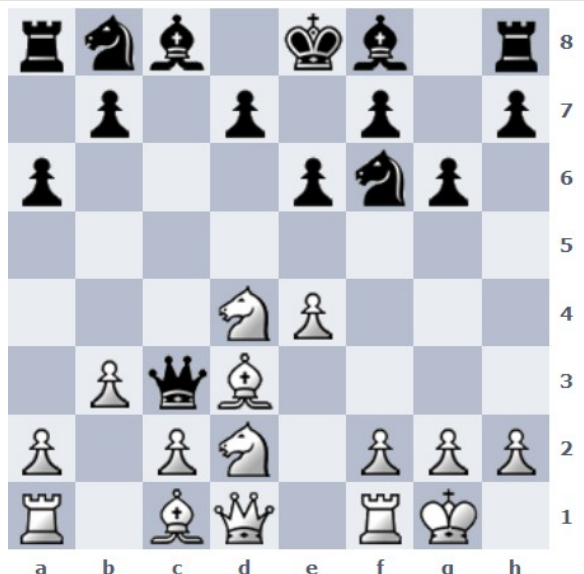
Schwarz am Zug



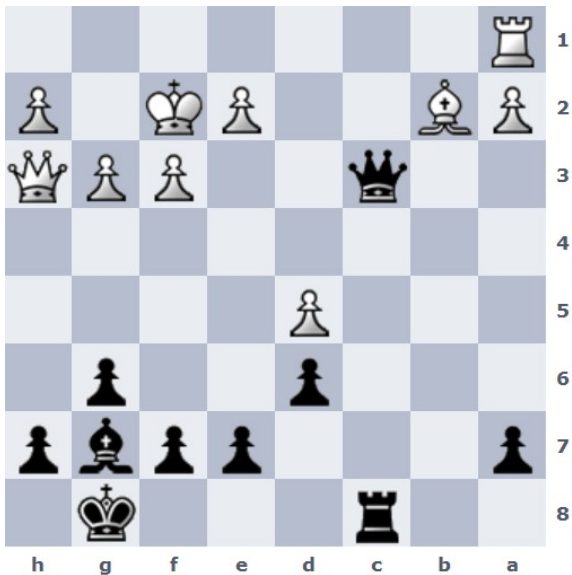
Weiß am Zug



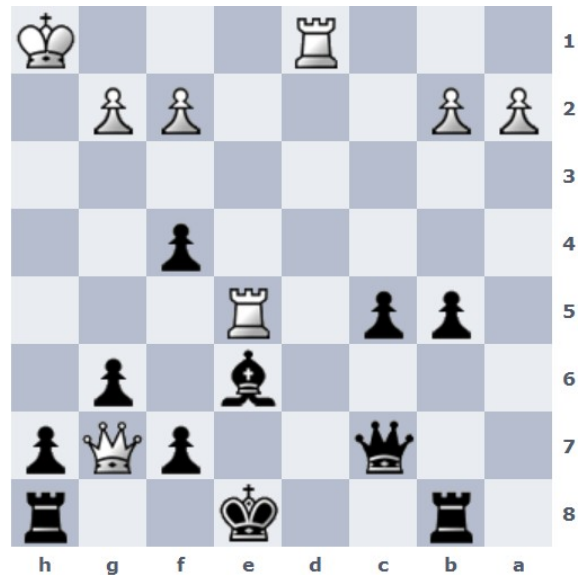
Weiß am Zug



Weiß am Zug



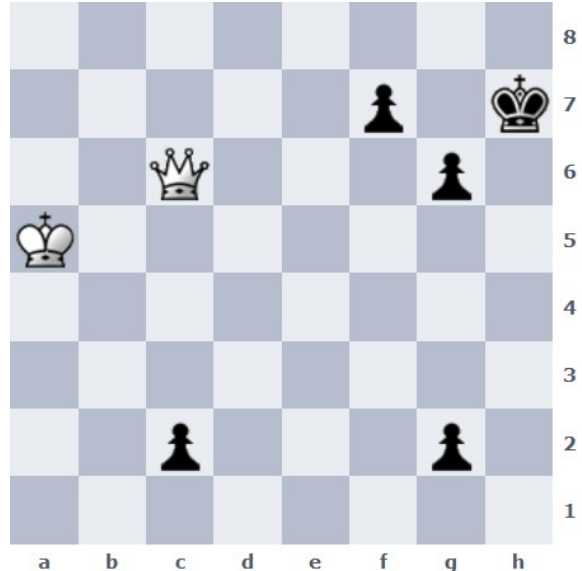
1. ... Dc5+ (DxL? DxT+ oder Dc2? Tc1) 2. Kg2 LxL



1. Ke7



1. ... g6 (es drohte Sg6+!! hxg6 Th1#)



1. Dc5! (hält den c- und g-Bauer) Kh6 2. Kb4 und gewinnt



1. Dg3 (g3? und Sf3 verlieren!) DxD 2. fxg3 Lxg3 3. Se2! und beide schwarze Läufer hängen



Ta1 und Sd4 hängen! 1. Tb1 DxS 2. Lb2 D... 3. LxS