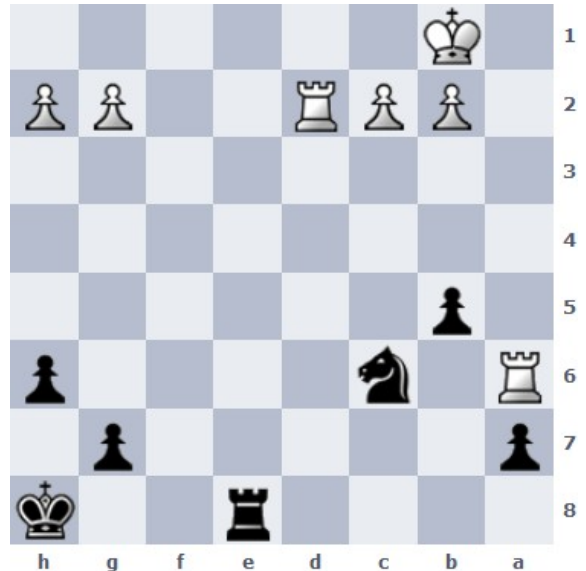
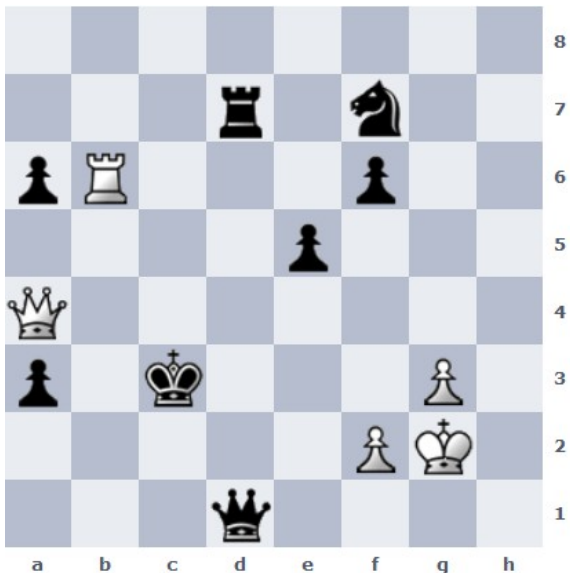




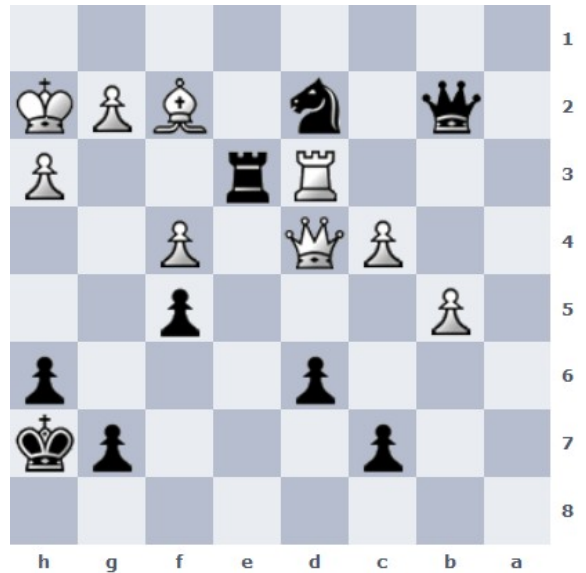
1. Da4+ Dd7 (oder Sd7 LxSa6 LxL DxL) 2. Lb5



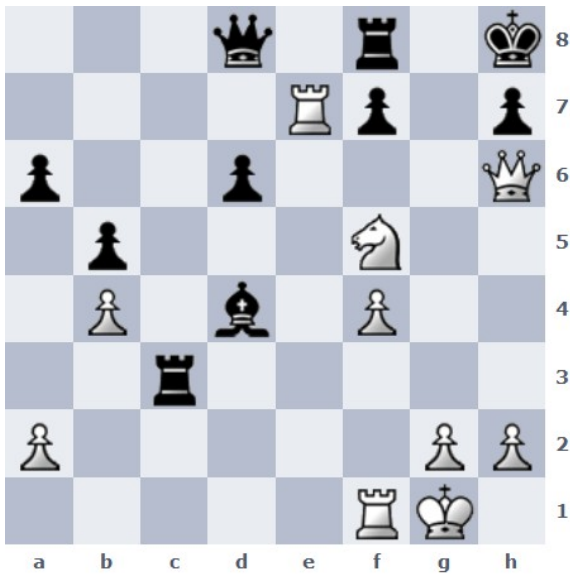
1. ... Te1+ 2. Ka2 Sb4+



1. Dc6+ Kd2 2. DxT+ Ke1 3. DxS



1. ... Sf3+!! 2. Kg3 (gxf3? DxL+ Kh1 Te1#) SxD



1. SxL DxT 2. Sf5 (droht SxD und Dg7#)



1. ... Se2