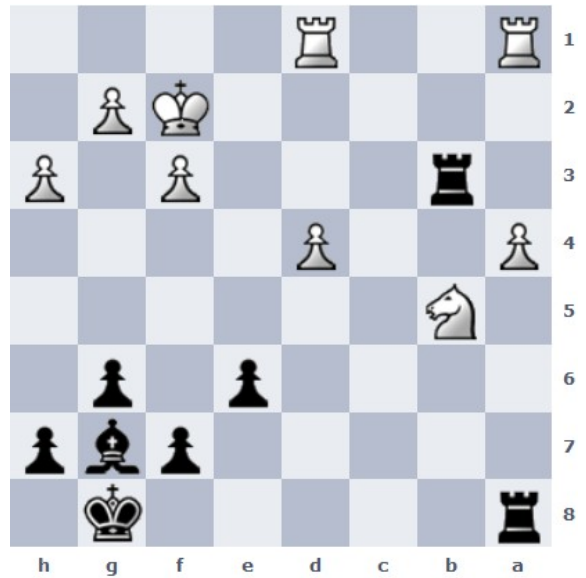
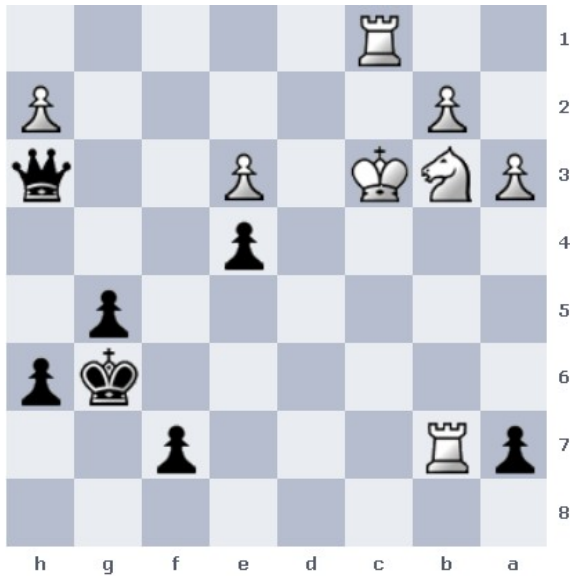


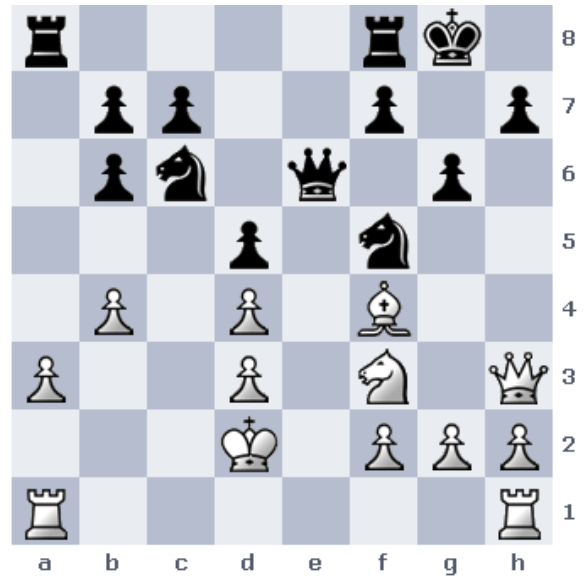
1. Td5!! (Doppelangriff auf Td2 und König durch De8#)
cxd5 2. De8#



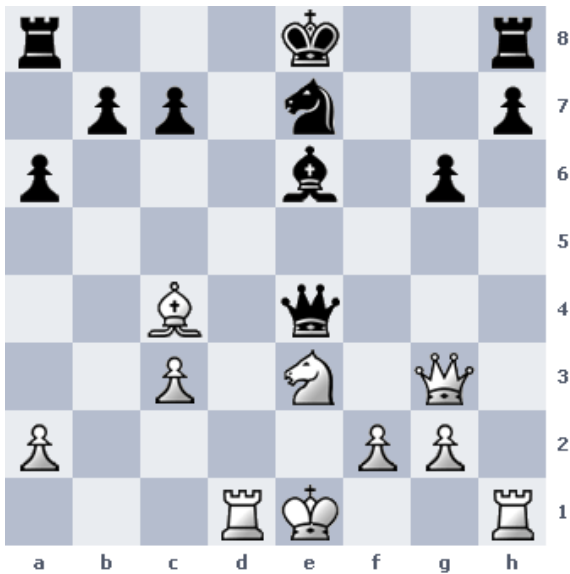
1. ... TxS!! 2. axb5 TxT 3. TxT Lxd4+ 4. Ke2 LxT



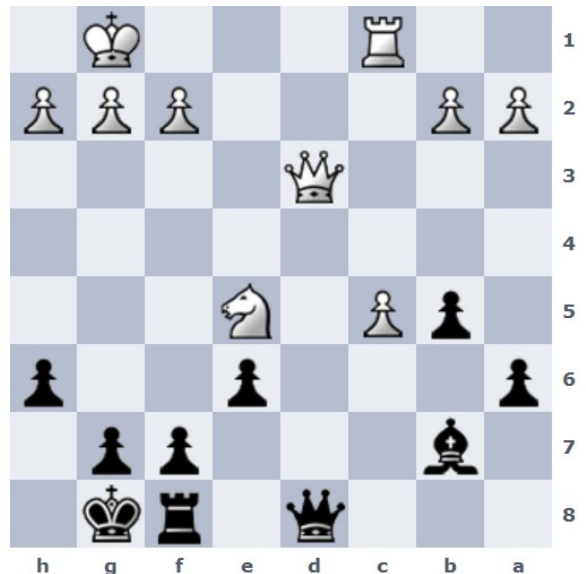
1. ... Dc8+



1. Sg5 (gewinnt die Dame wegen der Mattdrohung)



1. Th4! Dc6 (das einzige) 2. De5 (droht DxT und DxL)



1. ... Dg5 (droht Dxdg2#, DxT+ und DxS)