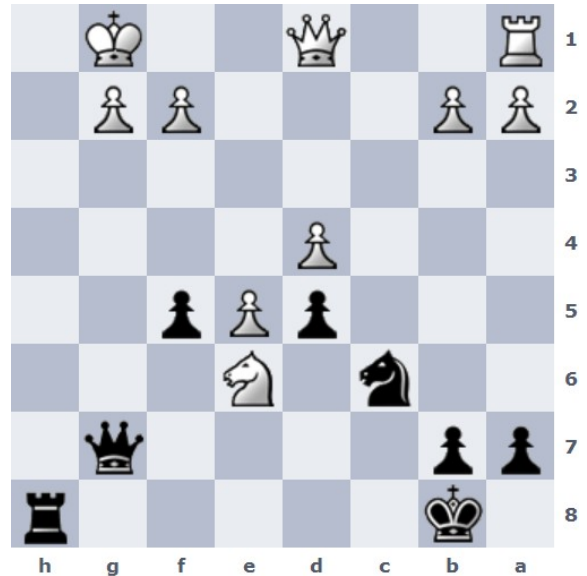
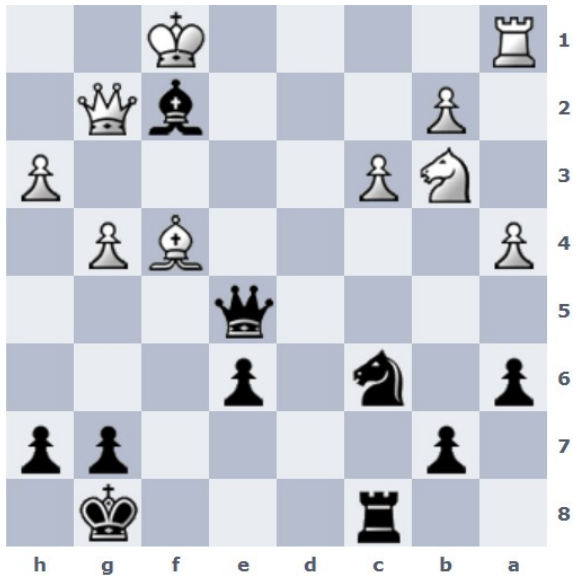


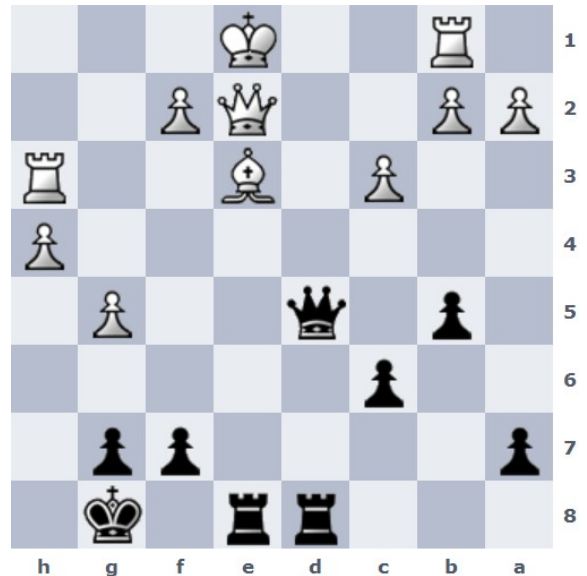
1. Dd5+ Kxh8 2. SxS LxS 3. Dxl



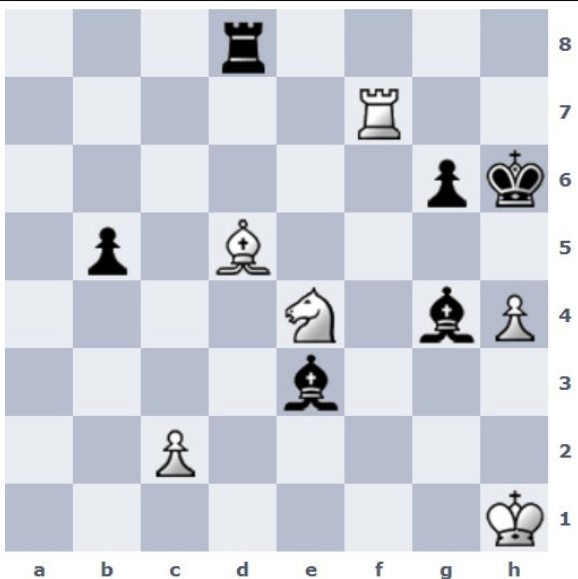
1. Dh6 (droht Dh1# und greift den Se6 an)



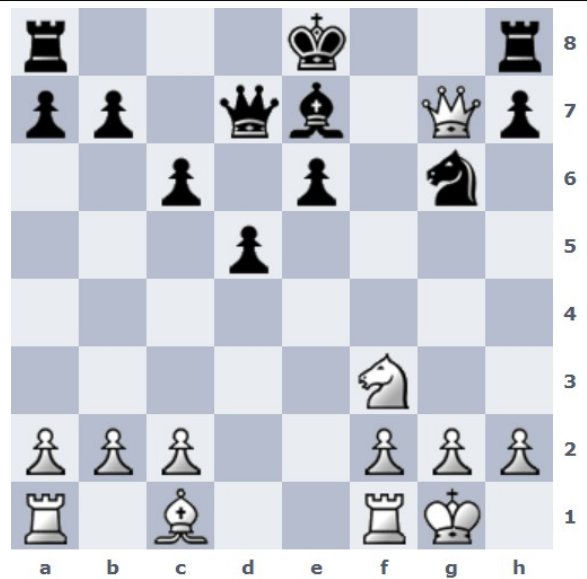
1. ... Dxf4 2. Dxf2 Dc4+



1. ... Df5



1. Sf6 (droht Th7# und SxL+) g5 2. SxL+ Kg6 3. SxL



1. Se5 Dc8 (Dd8? Df7#) 2. SxS (droht Dxl# und SxT) hxg6 3. DxT